



Your holiday retreat.
Sophisticated. Comfortable. Affordable.



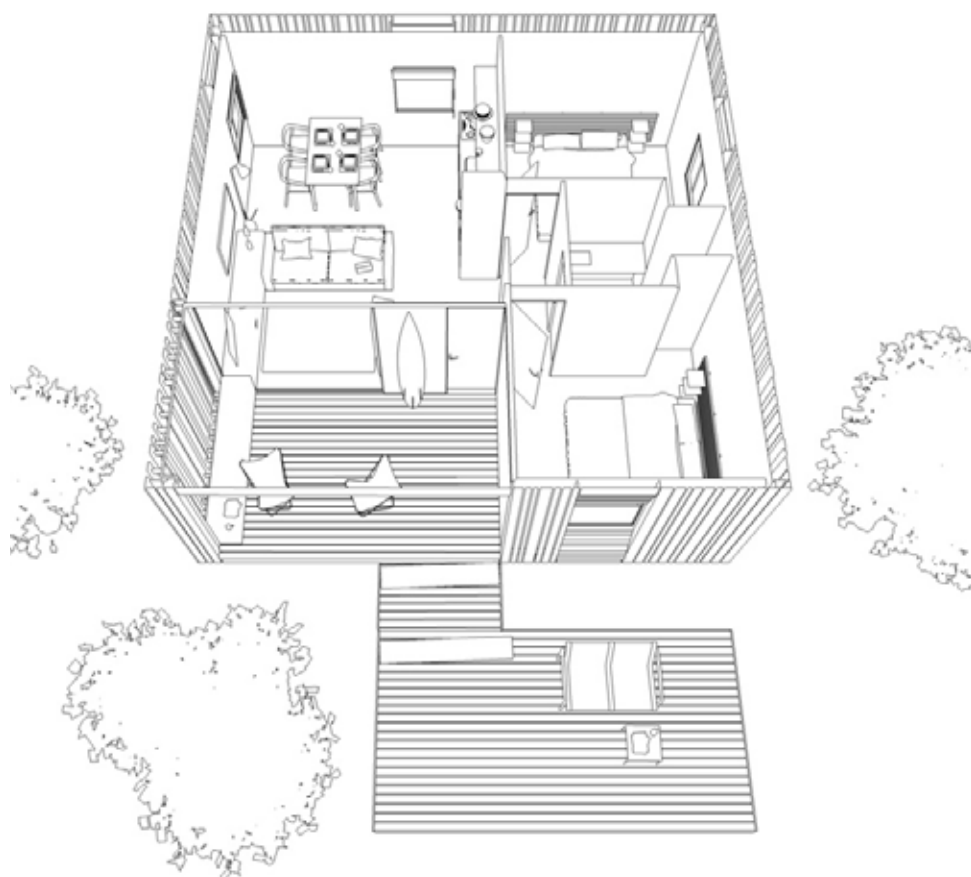
by **JULAR**



Your holiday retreat. Sophisticated. Comfortable. Affordable.

Join in an intimate contact with Nature, without renouncing the comfort you are entitled to.

Making use of the most advanced technique in sustainable construction, Jular has developed this new collection of modular houses, with a large incorporation of design, targeted for a 'rustic chic' line.



by **JULAR**



Making room for adventure.

Prefabrication advantages

Prefabrication is currently a competitive solution and with great reliability, as an alternative to traditional construction. The production in an indoor controlled environment allows tight control of quality standards, at lower price levels than those offered in traditional construction. Prefab allows the realization of large-scale projects with modern design and new architectural solutions that are reaching an increasing number of people.

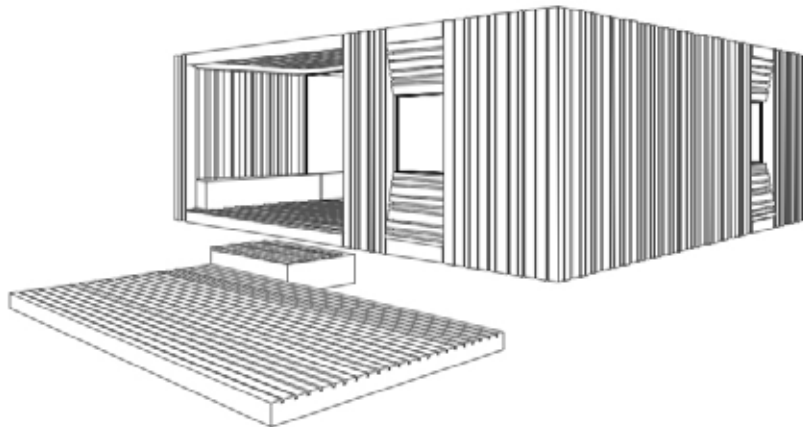
The modular construction system is based on fully standardized components, which make possible a fast assembling process at very competitive prices.

All modular components are factory-built and supplied in kits prepared for on-site assembling.

Each single panel has built-in structural functions, thermal and acoustic insulation, exterior and interior finishings, electrical and water network fittings, etc.

On top of the base panel a large variety of coatings is possible, allowing a great degree of personalization.

Thanks to its space-saving and ease of assembly features, kits can be shipped in containers to virtually any destination in the world.



How much does it cost?

Treehouse SW system is based on standardized panels. Depending on the requirements of each market, the walls can be made with different materials, varying from basic to the most luxurious ones. Compared with traditional construction, Treehouse SW system is cheaper for similar thermal and acoustic performances.

Also very important, the assembling process can be done by workers with medium-level of expertise, thus enabling a greater incorporation of local labor, resulting, in many cases, in a lower final price.

How long does the construction take?

Of all the advantages of Treehouse SW system, speed of assembly is the most outstanding feature.

Developed to be erected on poles, Treehouse SW system causes a minimum disturbance on site, keeping the ground almost untouched. Assembling time is measured in days and can vary between 3 to 8 days, depending on the complexity of the project.

Durability and maintenance

Treehouse SW structural panels are made of wood materials with the most advanced technology.

The average life-cycle of a modular house compares to that of a traditional one, as long as the same maintenance plan is applied.

Like any traditional house, a special attention must be devoted to roofs. They must be kept clean of leaves in order to allow a good drainage of rain water. If painted, exterior walls must be maintained at least every 4 years.

The option without coloured coating eliminates maintenance, being possible the evolution of the colour of the coating to a silver gray colour, by action of the UV rays and the rain.

by **JULAR**

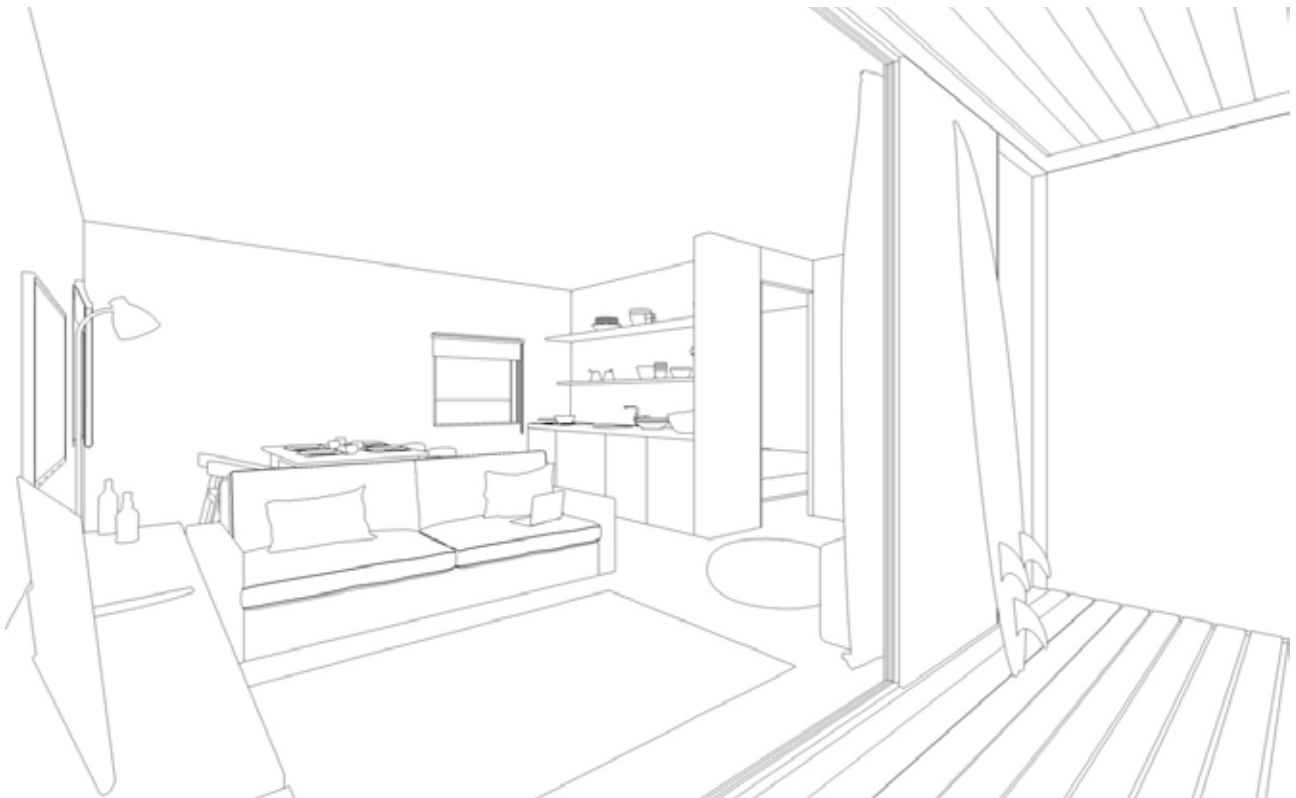


Depending on the interior and exterior coatings, assembling time is measured in days, and can vary between 3 and 8 days.

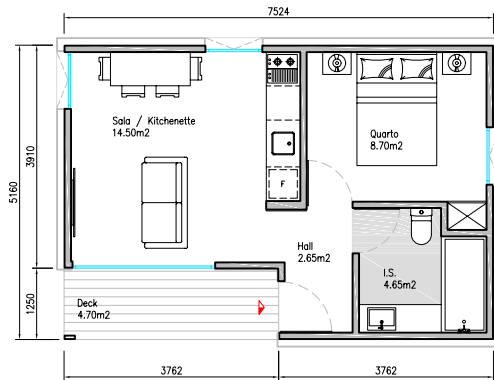


by **JULAR**





FLOOR PLAN



AREA

Indoor Area 37,5 sqm

DESCRIPTION

The T1 has a total of 37,5 sqm of indoor area, with bedroom, lounge, bathroom, kitchenette and outdoor lounge with deck.

The exterior finish of the ventilated façade may remain in the natural shade of the wood, or may include a coloured coating (optional).

MATERIALS AND FINISHES

WALLS

Wooden walls coated with acrylic washable paint; exterior walls with wood panel.

ROOF

Exterior coating with membranes, with water drainage through gargoyles.
Roofing panels with built-in thermal insulation.

BASIC EQUIPMENT

ELECTRICITY

Complete electric circuits, with power sockets and lighting, including main distribution board.

WATER AND SEWAGE

Complete hot and cold water piping and fittings; sewer and drain piping.

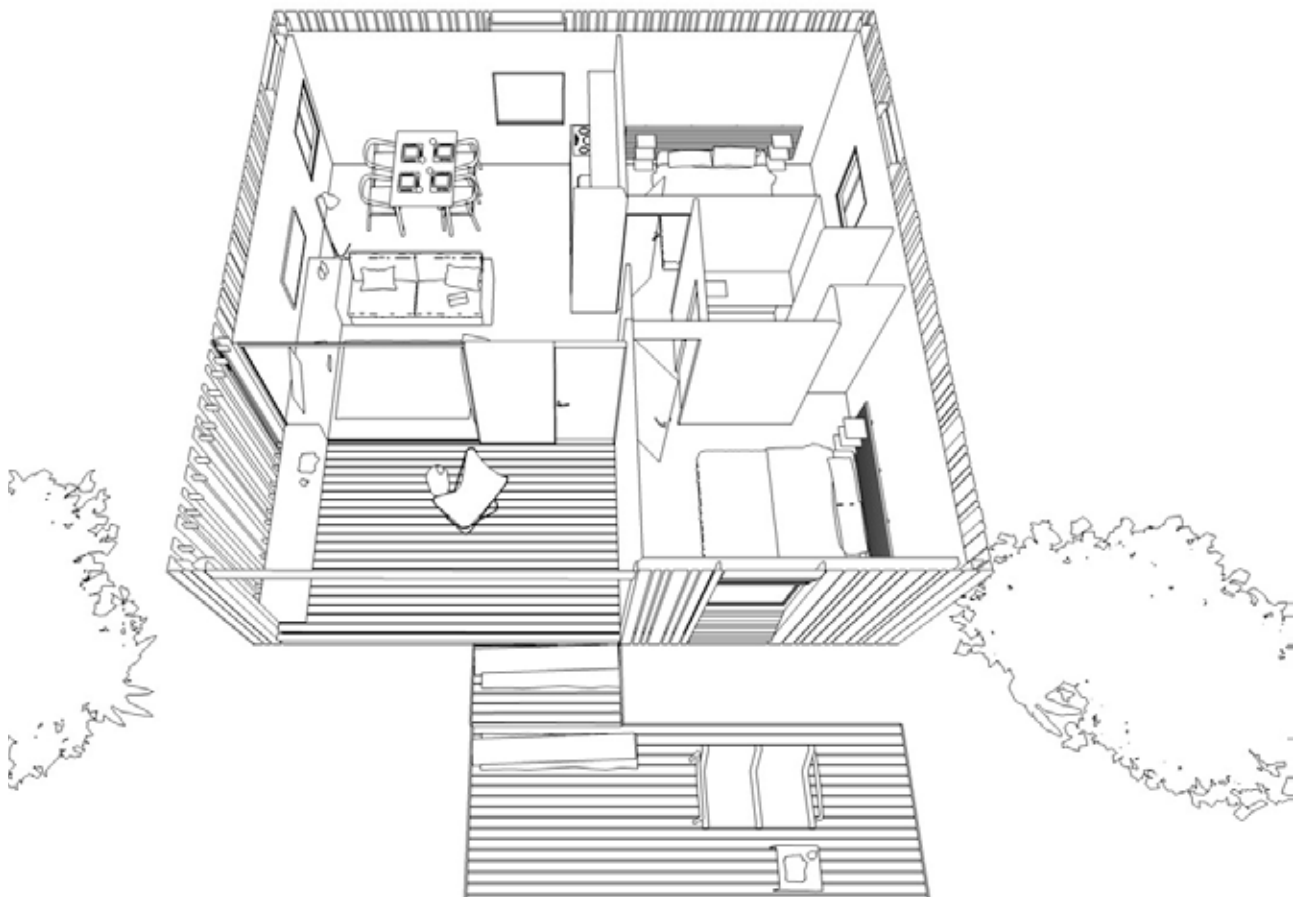
SANITARY WARE

Hand wash basin, shower, w.c. with flush cistern and mixer taps included.

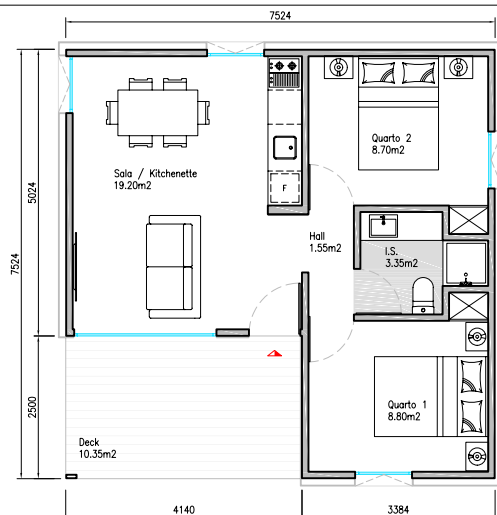
KITCHEN

The standard version includes a ready area for later installation of furniture and kitchen countertop, stove, mini-fridge and microwave (optional equipment).





FLOOR PLAN



AREA

Indoor Area 56,3 sqm

DESCRIPTION

The T2 has a total of 56,3 sqm of indoor area, with two bedrooms, lounge, bathroom, kitchenette and outdoor lounge with deck. The exterior finish of the ventilated façade may remain in the natural shade of the wood, or may include a coloured coating (optional).

MATERIALS AND FINISHES

WALLS

Wooden walls coated with acrylic washable paint; exterior walls with wood panel.

ROOF

Exterior coating with membranes, with water drainage through gargoyles. Roofing panels with built-in thermal insulation.

BASIC EQUIPMENT

ELECTRICITY

Complete electric circuits, with power sockets and lighting, including main distribution board.

WATER AND SEWAGE

Complete hot and cold water piping and fittings; sewer and drain piping.

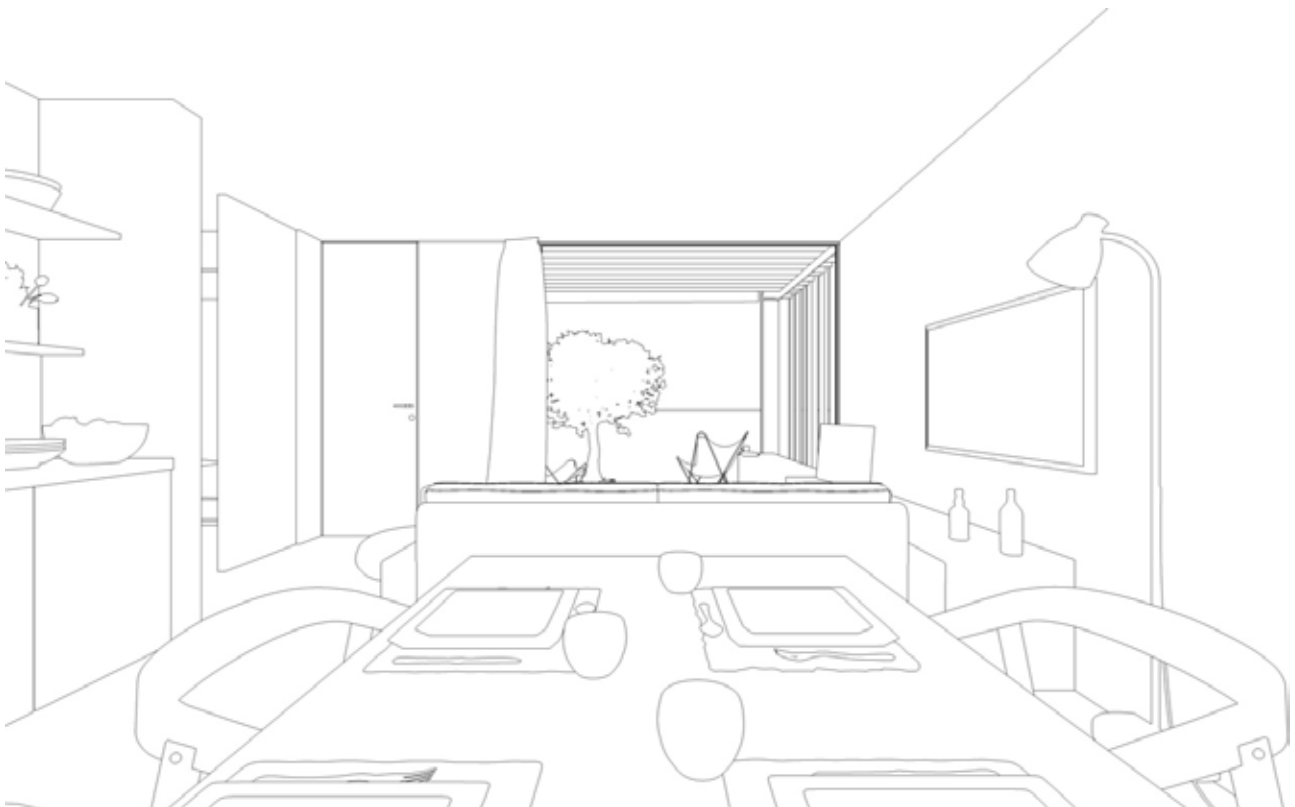
SANITARY WARE

Hand wash basin, shower, w.c. with flush cistern and mixer taps included.

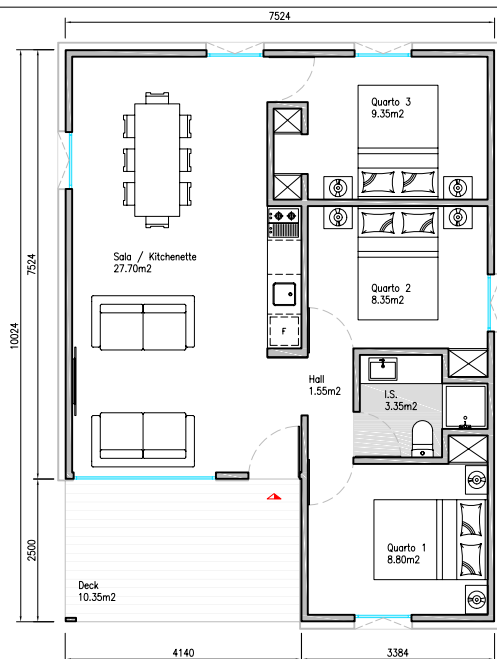
KITCHEN

The standard version includes a ready area for later installation of furniture and kitchen countertop, stove, mini-fridge and microwave (optional equipment).





FLOOR PLAN



AREA

Indoor Area 75 sqm

DESCRIPTION

The T3 has a total of 75 sqm of indoor area, with three bedrooms, lounge, bathroom, kitchenette and outdoor lounge with deck. The exterior finish of the ventilated façade may remain in the natural shade of the wood, or may include a coloured coating (optional).

MATERIALS AND FINISHES

WALLS

Wooden walls coated with acrylic washable paint; exterior walls with wood panel.

ROOF

Exterior coating with membranes, with water drainage through gargoyles. Roofing panels with built-in thermal insulation.

BASIC EQUIPMENT

ELECTRICITY

Complete electric circuits, with power sockets and lighting, including main distribution board.

WATER AND SEWAGE

Complete hot and cold water piping and fittings; sewer and drain piping.

SANITARY WARE

Hand wash basin, shower, w.c. with flush cistern and mixer taps included.

KITCHEN

The standard version includes a ready area for later installation of furniture and kitchen countertop, stove, mini-fridge and microwave (optional equipment).





by **JULAR**



JULAR has developed an expertise in off-site-construction in recent years, and has received international awards for that.

On these pages you will find examples of JULAR's portfolio.





Our technical team has a broad experience in the design and development of building structures.



High production capacity;
more than 20.000 sqm of
indoor production area.



About JULAR

Treehouse SW system was developed by **Jular**, a construction company in the Portuguese real-estate market since 1973.

Jular's own engineering team allows close collaboration with developers and designers in order to find original solutions, or enhance existing projects.

Modern production premises and raw material warehouses totalling up to 20.000 sqm are key ingredients to provide a quick, efficient and high-quality response.

Quality Certification

Quality and sustainability are **Jular**'s guiding principles.

Jular has been certified in Quality Management Systems (ISO 9001) since 2006, and has achieved in 2012 the certification in Environmental Management (ISO 14001).





by **JULAR**

AZAMBUJA - PORTUGAL

+351 263 850 070

mail@jular.pt



Visit JULAR'S PORTFOLIO online:

jular.pt

treehouse.pt

