



**s:wood**  
WOOD FLOORS



## TABLE OF CONTENTS

4	Swood Plank
5	Swood Plank Riga
6	Swood 3Strip
7	Swood XL
8	Swood Earth & Fire   New Classics
9	Swood Vintage
10	Swood Originals   Lifestyle
11	Solid
12	Slim HDF
13	Slim Ply
14	Svinyl
16	Strat Home
17	Strat Office
18	Strat Traffic
19	Sdeck Nature
20	Sdeck Mosaic   Thermowood
21	Sdeck Composite
22	Swood Accessories



Engineered floors | PLANK

Three-layer engineered wood floors, with 1-lamella design.  
Top layer with solid wood, available in several different species.  
Easy installation, maintenance and cleaning.



Beech



Oak



Oak Cosenza



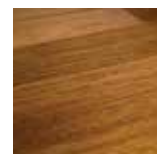
Cherry



Doussié



Iroko



Merbau



Teak



Oak Maron



Walnut



Sucupira



Engineered floors | PLANK RIGA

Three-layer engineered wood floors, with 1-lamella design.  
Top layer with solid Larch wood.



Larch Natural  
Lacquer/Oil



Larch Natural  
Oil



Larch Country



Larch Oil 105



Three-layer engineered wood floors, with 3-lamella design.  
Top layer with solid wood, available in several different species.  
Appearance of traditional parquet.



Ash Ceriale



Ash Vaila



Steamed Beech



Oak Abetone



Oak Lecco



Oak Pima



Oak Brisbee



Smoked Oak



Oak Supai

High quality engineered wood floors, with plywood base with 19-21 mm thickness, and top layer with solid wood with 6 mm thickness.  
Lacquered finishing.



Maple



European Oak



Doussié



Afromosia



Jatobá



Walnut

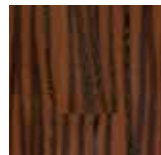


Wengé

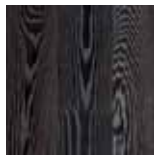


Engineered floors | EARTH & FIRE

Engineered wood floors with top layer with Oak or Ash.  
Intense and vivid tones.



Okavango



Yellowstone



Patagonia



Engineered floors | NEW CLASSICS

Engineered wood floors, inspired from the classic patterns of 19<sup>th</sup>  
century salons.



Cambridge



Monaco



Engineered floors | VINTAGE

Engineered wood floors with top layer with Oak.  
Elegant and attractive tones.



New Hampshire



Tasmania FSC



Oregon



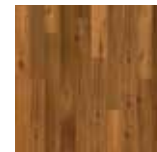
Alps



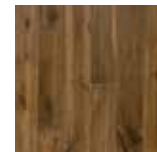
K2



Jura FSC



Himalaya



Bosporus



Ural FSC



Engineered floors | ORIGINALS

Engineered wood floors with top layer with Oak or Ash.  
The character of wood in its purest form.



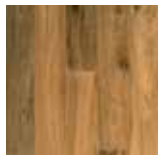
Veneto FSC



Portland FSC



Arctic FSC



Ottawa



Smokey Mountains FSC



Los Angeles



Engineered floors | LIFESTYLE

Engineered wood floors with top layer with Oak or Ash.  
A collection of minimalist wood floors.



Glacier



Méditerranée



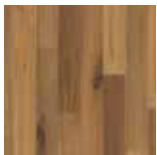
Toronto ML



Tulsa ML



Pyrenees

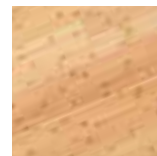


Phoenix



Massive floors

Solid wood floors, microbevelled, with high resistance finishing.



Bamboo Natural



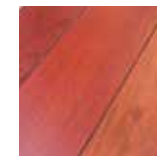
Bamboo Dark



Oak



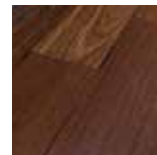
Timborana



Jatobá



Muiracatiara



Sucupira



Three-layer wood floors with 8,5 mm total thickness.  
Top layer with solid wood with 0,6 mm thickness.  
Finishing with high resistance lacquer.



Slim Zebrano Loft



Steamed Beech 1L



Cherry 1L



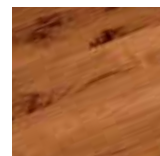
Cherry 3L



Oak Loft



Zebrano Loft



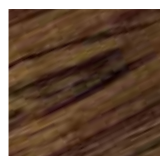
Teak 3L



Walnut 1L



Walnut 3L



Mutene 1L



Wengé 1L

Engineered wood floors with top layer with solid wood.  
High durability and easy application.  
Especially suited for renovation projects.



Slim Cherry Muscovado



Hard Maple Cream



Oak Tower



Oak Blanc



Oak/Ash Trestle



Oak Reef



Oak Loft



Cherry Muscovado



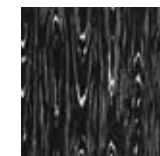
Oak Amber



Walnut Cocoa



Oak Coffee



Poplar Notting Hill



Vinyl floors | CLIC

Water resistant and recyclable vinyl floorings.  
Suitable for bathrooms and kitchens.  
Installation system: UniClic.



Oak Aspen White 1L



Maple 1L



Oak Dresden 1L



Oak Stratford 1L



Cherry 2L



Oak Markham 1L



Dakota Hickory 1L

OFFICE



Oak Red 2L



Dark Walnut 2L

PROJECT



Vinyl floors | CLIC

Water resistant and recyclable vinyl floorings.  
Suitable for bathrooms and kitchens.  
Installation system: UniClic.



Oak Golden White 1L



Oak Golden Natural 1L



Oak Smoky Natural 1L



Firenze

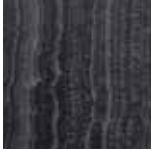


Bologna



Milano

MORE

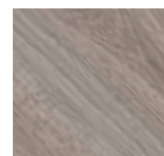


Napoli

STONE



Laminate floors with colour and appearance of wood.  
Highly resistant, these floors are a barrier against dirt and bacteria.  
Suitable for domestic use (AC 3).



8014 Grey 1L



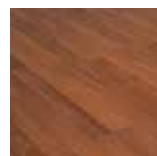
381 Beech 1L



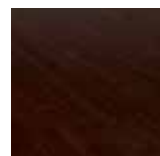
704 Oak 1L



344 Cherry 1L



2362 Jatobá  
2L



854 Wengé 1L



Laminate floors with colour and appearance of wood.  
Highly resistant, these floors are a barrier against dirt and bacteria.  
Suitable for offices or commercial areas (AC 4).



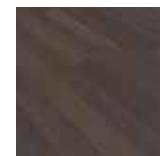
381 Beech 1L



704 Oak 1L



2281 Merbau  
2L



2420 Wengé  
2L



Laminate floors with colour and appearance of wood.  
Highly resistant, these floors are a barrier against dirt and bacteria.  
Suitable for areas with heavy pedestrian traffic (AC 5).



1783 Beech 1L



2833 Oak  
Camargue 1L



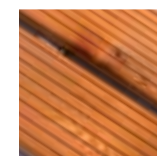
1361 Cherry 1L



2412 Wengé  
Madagascar 1L



Traditional natural solid wood deck, available in different species.



Larch



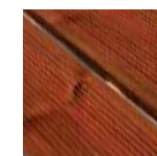
Garapa



Ipê



Massaranduba



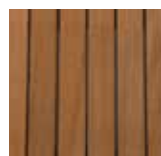
Nordic Pine



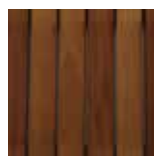
Ipeúba



Solid wood deck, formed by square shaped pieces instead of boards.



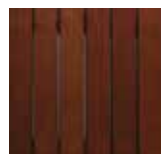
Piquiá



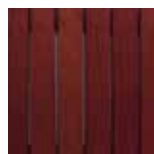
Bubinga



Jatobá



Tatajuba



Sucupira



Ipê

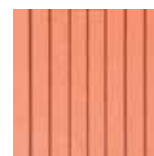


Thermowood

Thermally treated wooden deck, without chemical products - only heat and steam are used.



Deck built from natural wood fibres and polypropylene or PVC.  
100% recyclable. Extremely resistant to weather, durable and easy to maintain.



Garapa



Teak



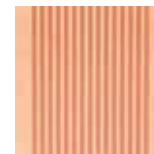
Grey



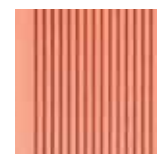
Wengé



Elegant profile



Maple



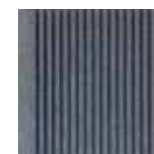
Garapa



Teak



Grey



Wengé



Solid profile





Additional to Swood wood floors, it is available a wide range of accessories: mouldings, profiles, underlays, oils and waxes for wood finishing, cleaning and maintenance products, etc.



Mouldings



Underlays



Oils and Waxes



Wood Reviver



Scratch-Fix  
Repair Kit



Hygrometers



**JULAR** Madeiras, S.A.  
Quinta de Santa Rosa  
Apt. 1042  
P-2681-901 Camarate  
Lisbon - Portugal

**PORTUGAL**  
+351 219 484 000  
+351 263 850 070  
mail@jular.pt

**www.jular.pt**

Local Agent:

